

Monitor Modes

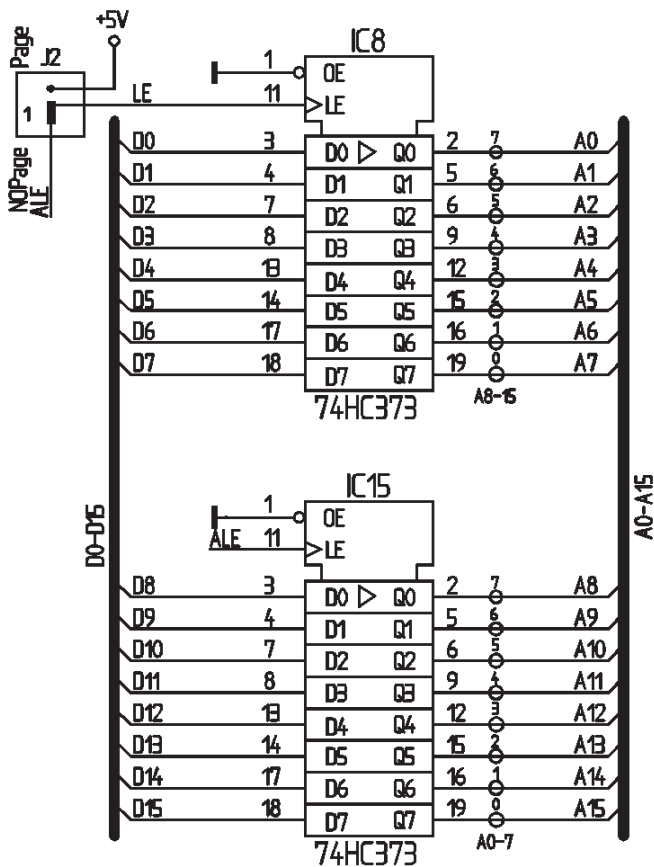
ext. Uart	ON = use ext. RS232 @ 57600bps OFF = use int. RS232 @ 19200bps
LED	ON = LED's display Port 1 Status OFF = LED's off
Monitor	ON = use Monitor for Debugging OFF = User EPROM see table Memory Map

Monitor Selection (Monitor = ON)

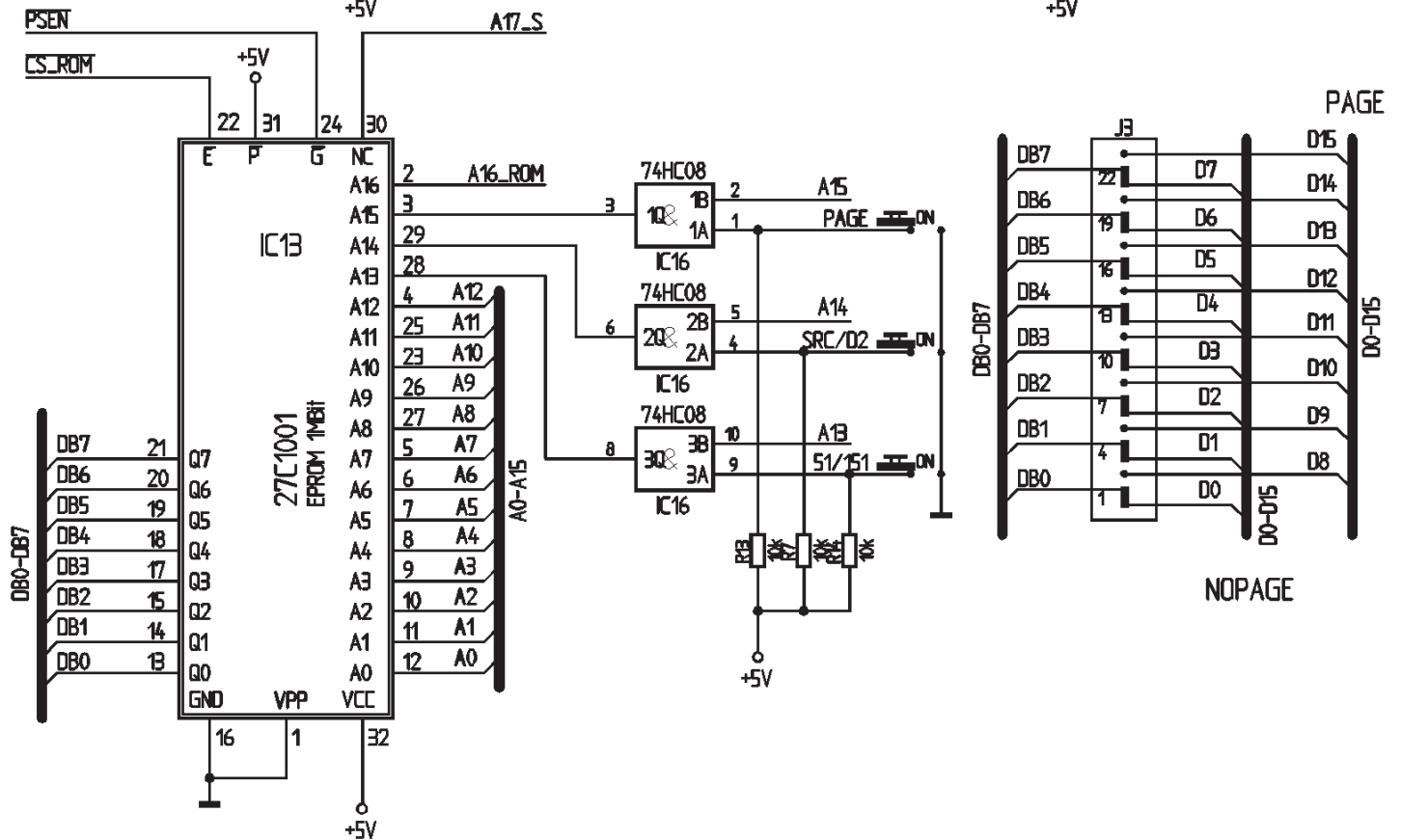
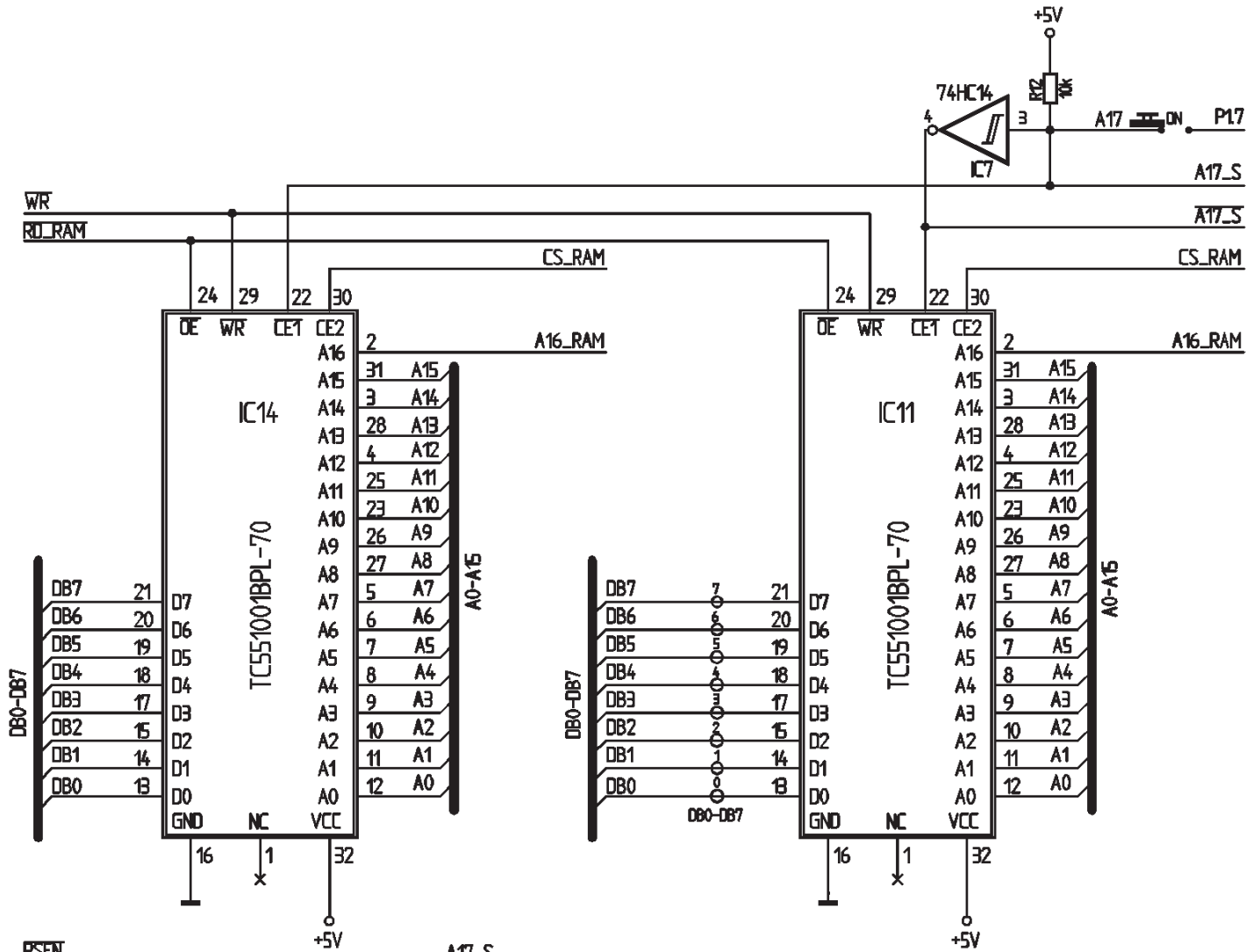
CPU	51/151	Page	SRC/DP2	MAP0	MAP1
251	OFF	ON=Page Mode OFF=8051 Bus	ON=Source Mode OFF=Binary Mode	OFF	OFF
151	ON		OFF	ON	ON
8051 Derivates	ON	OFF	OFF	ON	ON
80320	ON	OFF	ON	ON	ON

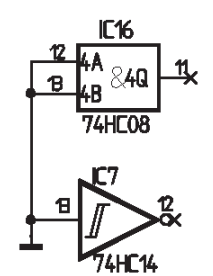
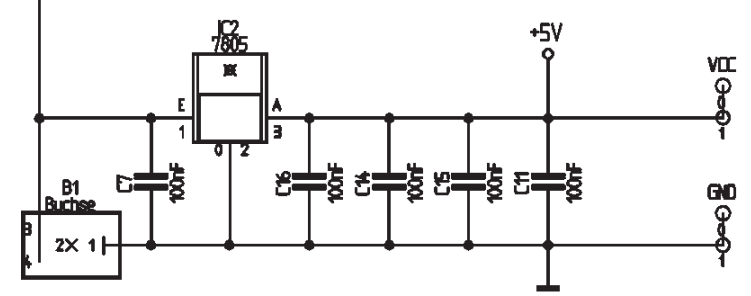
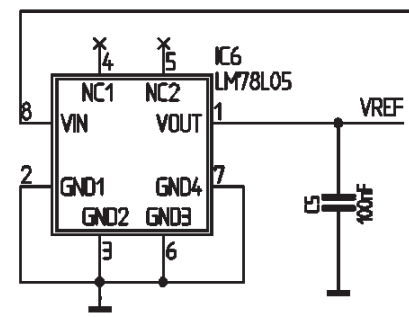
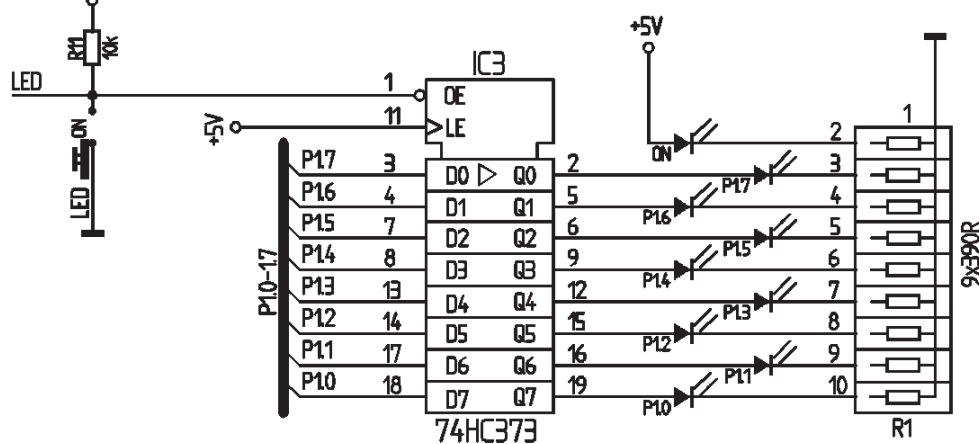
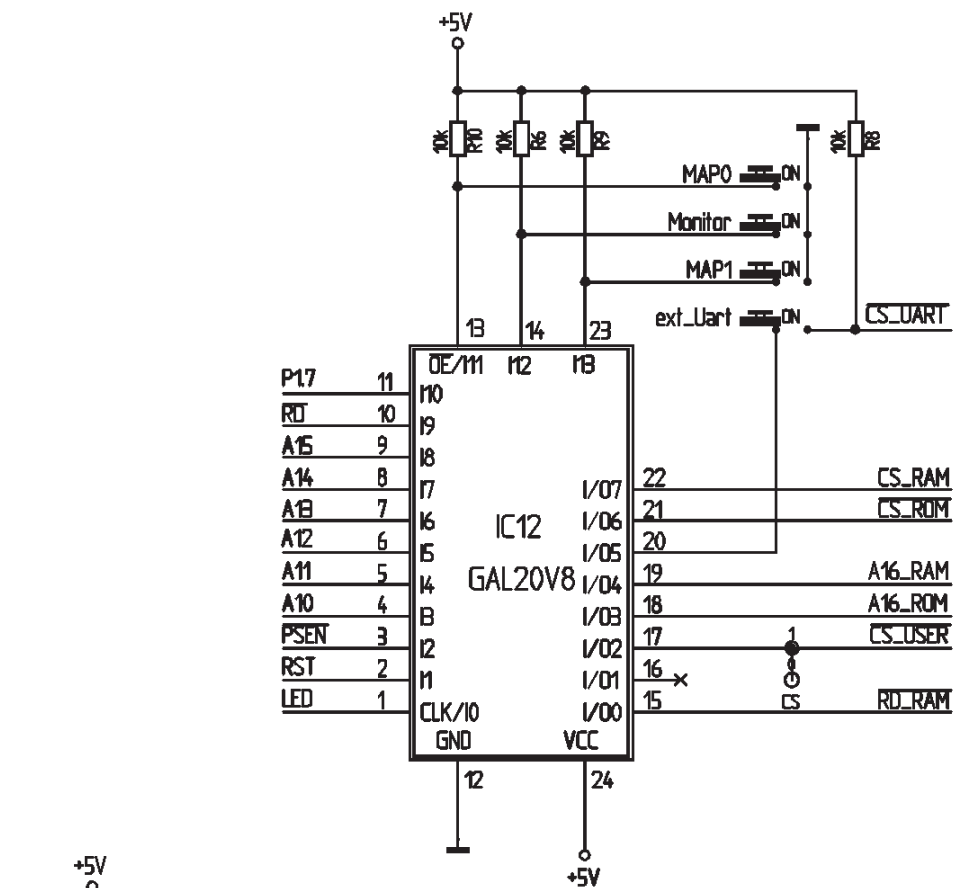
Memory Map for User EPROM (Monitor = OFF)

51/151	151	Page	SRC/DP2	RAM
OFF	OFF	64kB FF0000..FFFFFF (*)		192kB 0..02FFFF
ON	OFF	128kB FE0000..FFFFFF (*)		128kB 0..01FFFF
OFF	ON	224kB 008000..00FFFF FD0000..FFFFFF (*)		32kB 0..007FFF
ON	ON	8051 Mode 64kB C.0..C.FFFF		8051 Mode 64kB X.0..X.DFFF (*)
* Memory Map excludes USER & UART areas				
USER CS		FFE000..FFE3FF		XE000..XE3FF
UART CS		FFE400..FFE7FF		XE400..XE7FF



MCB251			
Version	V2.0		
Name	Keil		
Projekt	mcb251sb_6		
Datum	12.07.96	10:10:11	Page 1





MCB251		Microcontroller Board	
Version	V2.0		
Name	Keil		
Projekt	mcb251sb_6		
Datum	12.07.96		
		10:10:11	Page 2