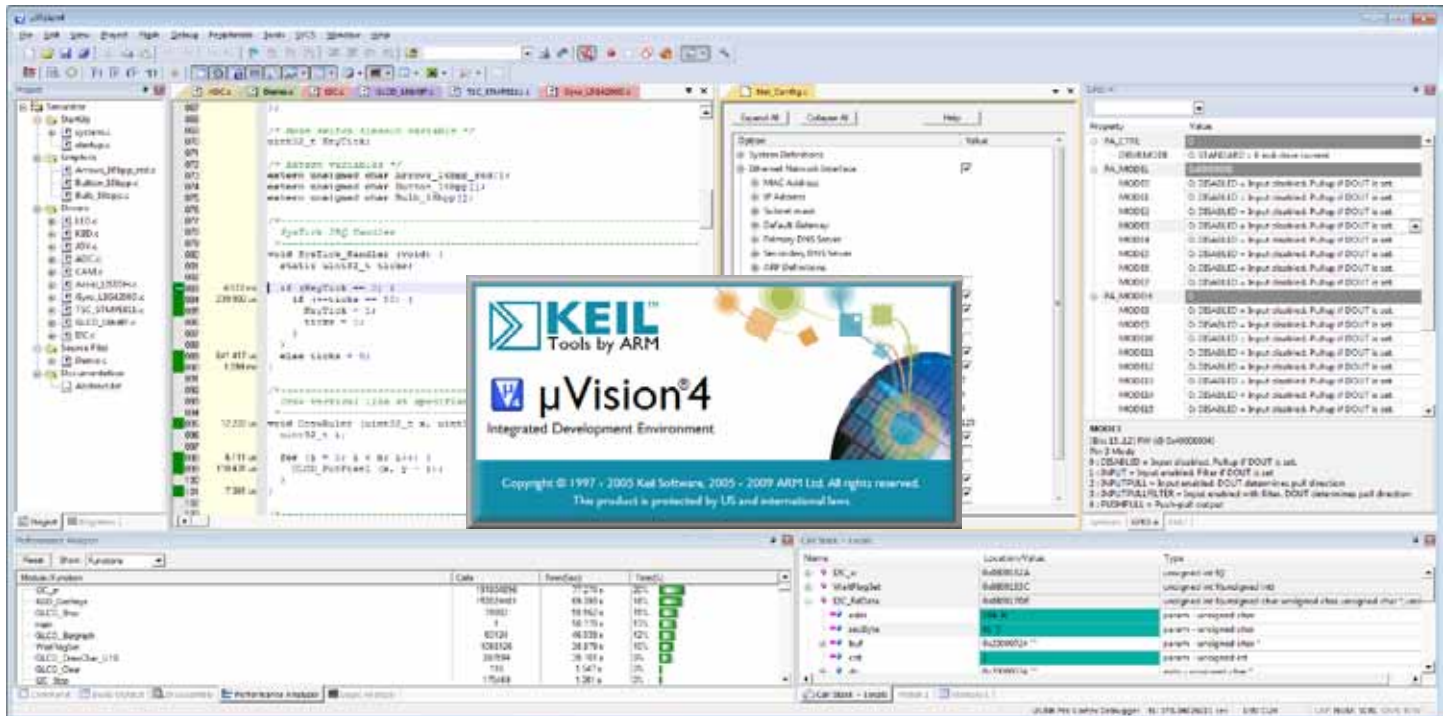


Keil Development Tools

For Infineon Microcontrollers



Keil μVision is the Integrated Development Environment for Infineon XC800, XC166/XC2000, and XMC4000 microcontrollers

Keil™ provides industry leading tools for Infineon XC800 and XC166/XC2000 microcontrollers.

- Keil PK51 Professional Development Kit for X800
- Keil PK166 Professional Development for XC166/XC2000
- ARTX166 RTOS and Middleware for XC166/XC2000

Infineon has now expanded their MCU portfolio with the ARM® Cortex™-M4 processor-based XMC4000 family.

The XMC4000 devices are fully supported in Keil MDK-ARM™ (Microcontroller Development Kit) making it the natural upgrade path for users of PK51 or PK166.

MDK-ARM is the complete software development environment for Cortex-M series, Cortex-R4, ARM7™ and ARM9™ processor-based devices. It is specifically designed for microcontroller applications, it is easy to learn and use, yet powerful enough for the most demanding embedded applications.

Keil Development Tool Kit	PK51	PK166 & ARTX166	MDK-ARM
Infineon Device Family Support	XC800	XC166/XE166/XC2000	XMC4000
μVision4	✓	✓	✓
Compiler	C51 Version 9	C166 Version 7	ARM C/C++ Compiler
RTOS Kernel	RTXTiny 2	RTX	RTX CMSIS-RTOS compliant
Middleware Libraries		✓	✓
Debug Connectivity			
- ULINK Family	✓	✓	✓
- Infineon DAS	✓	✓	
- Additional 3rd Party Adapters			✓
DAVE Import	✓	✓	✓

An overview of all supported microcontrollers can be found on www.keil.com/dd.

The Device Database contains example programs and information about the available middleware components.

Special upgrade offers are available.
Please contact our Sales Team

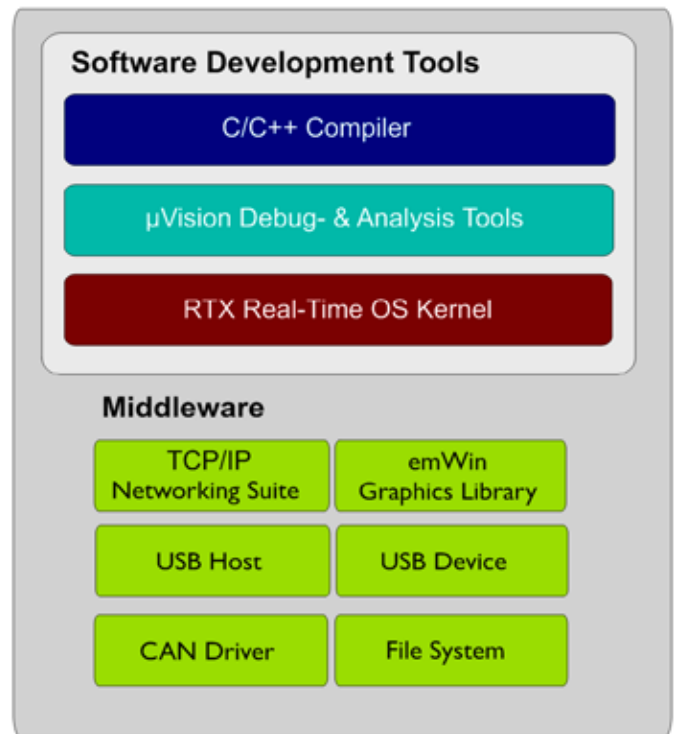


MDK-ARM

MDK-ARM combines the ARM C/C++ Compiler with the Keil RTX real-time operating system and middleware libraries. This toolchain is integrated into μ Vision which includes project management, editor, and debugger in a single easy-to-use environment.

MDK-Professional includes a range of middleware components designed and optimized for the Cortex-M series architecture that enable developers to make rapid progress on complex MCU applications. These include:

- TCP/IP networking suite - full support for transmission protocols and application level services such as HTTP, Telnet, SMTP, SNMP, and FTP
- USB Host - embedded USB stack supporting MSC (Mass Storage Class) and HID (Human Interface Device) classes
- USB Device - support for standard device driver classes available with all Windows PCs (MSD, HID, ADC, and CDC)
- File System - FAT 12/16/32 file system supporting RAM, ROM, NAND/NOR Flash, and SD/SDHC/MMC cards
- Graphics Library - allows users to create sophisticated user interfaces including touchscreen
- CAN Interface - provides a standard programming API for supported CAN enabled microcontrollers.



MDK-Professional provides an environment for software development in XMC4000

Infinion DAVE integration

DAVE™ 3 with its pool of pre-developed and pre-tested software components is the innovative software solution for the Infineon XMC4000 microcontroller family. DAVE 3 is based on Eclipse and the CMSIS standard. The new CMSIS RTOS API is an integral part of that offering.

DAVE 3 projects can be exported to MDK-ARM. The μ Vision Debugger offers kernel awareness for the RTOS component.



ROM size comparison DAVE 3 (GCC) and MDK-ARM for Infineon "webserver_demo"

ULINK Debug Adapters

The ULINK family of USB Debug Adapters connect your PC's USB port to your target system (via JTAG or SWD), allowing you to debug and analyze embedded programs running on target hardware. The ULINKpro provides unique streaming trace directly to your PC, enabling advanced analysis of your applications such as Execution Profiling and Code Coverage.



ULINKpro supports the XMC4000 family and enables instruction trace via ETM.

www.keil.com/infineon

All brand names or product names are the property of their respective holders. Neither the whole nor any part of the information contained in, or the product described in, this document may be adapted or reproduced in any material form except with the prior written permission of the copyright holder. The product described in this document is subject to continuous developments and improvements. All particulars of the product and its use contained in this document are given in good faith. All warranties implied or expressed, including but not limited to implied warranties of satisfactory quality or fitness for purpose are excluded. This document is intended only to provide information to the reader about the product. To the extent permitted by local laws ARM shall not be liable for any loss or damage arising from the use of any information in this document or any error or omission in such information. Copyright © 2012 ARM Ltd.

Program examples and detailed technical information are available from your distributor and our web site (www.keil.com).

ARM Ltd. www.arm.com

UK
T: +44 1223 400400

FRANCE
T: +33 1 39 30 47 89

JAPAN
T: +81 45 477 5260

TAIWAN
T: +886 2 2627 1681

CHINA
T: +86 21 62351296

US
T: +1 800 348 8051

GERMANY
T: +49 89 456040-20

KOREA
T: +82 31 712 8234

ISRAEL
T: +972 9 7632000

INDIA
T: +91 80 5138 4000