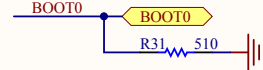
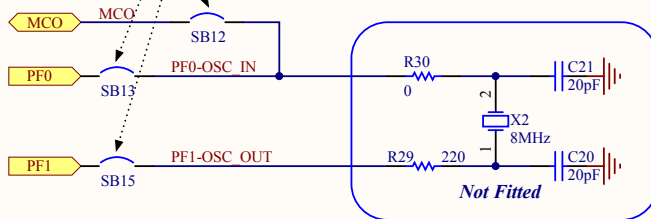




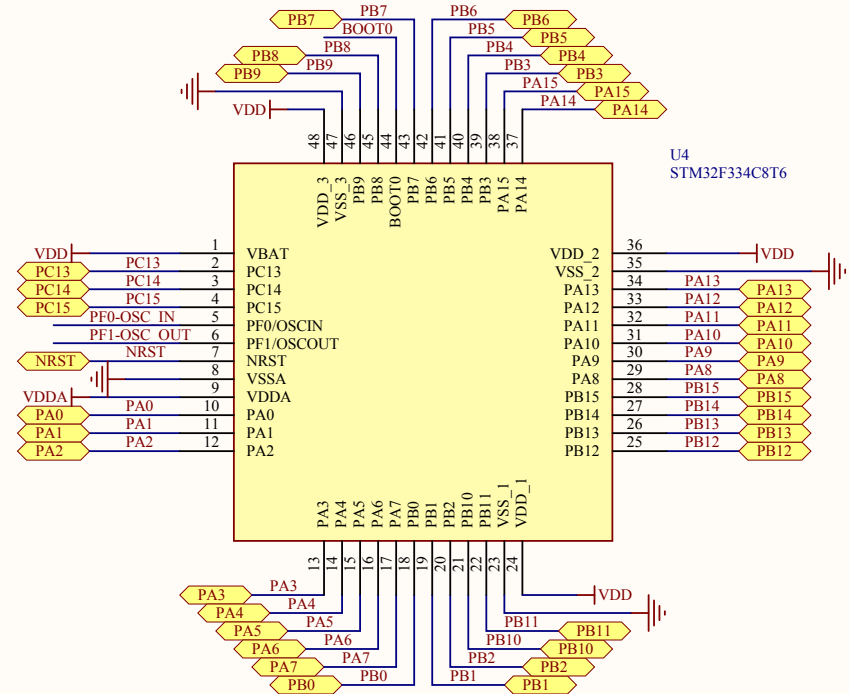
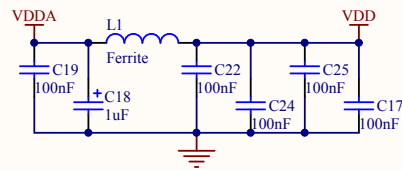
*SBx Must be very close to the STM32F334*



*Must be close to the Crystal*



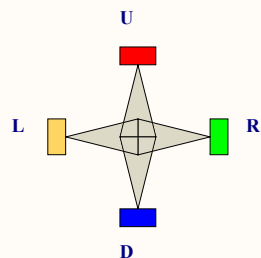
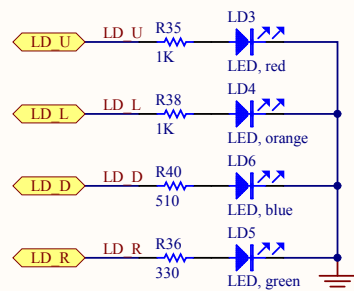
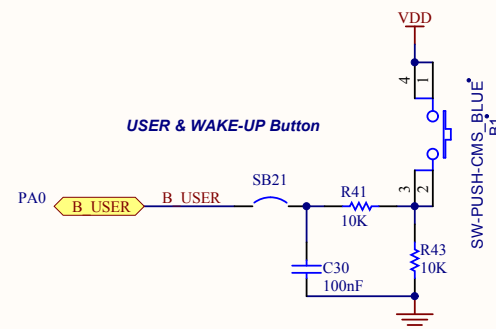
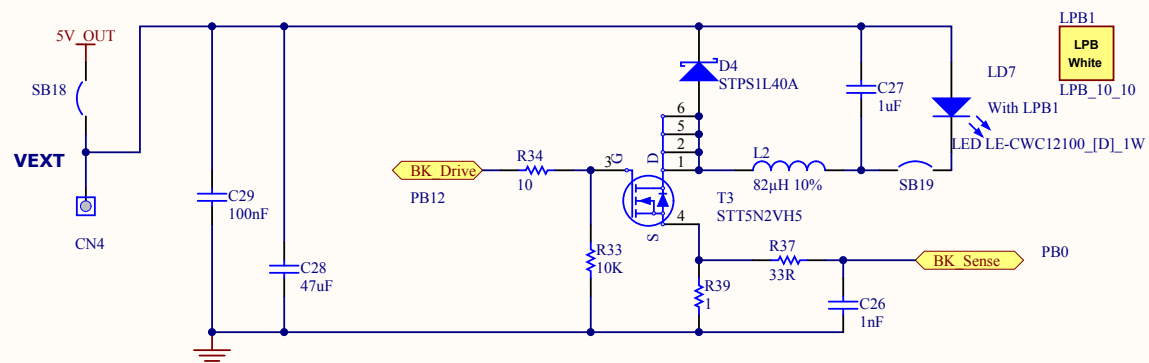
*All this block must be very close to the STM32F334*



PA0	B USER	B USER
PB6	LD U	LD U
PB7	LD D	LD D
PB8	LD L	LD L
PB9	LD R	LD R
PB0	BK Sense	BK Sense
PB12	BK Drive	BK Drive
PA1	Vin Sense	Vin Sense
PA3	Vout Sense	Vout Sense
PA11	P2 Drive	P2 Drive
PB14	RC	RC
PA10	N2 Drive	N2 Drive
PA9	N1 Drive	N1 Drive
PA8	P1 Drive	P1 Drive

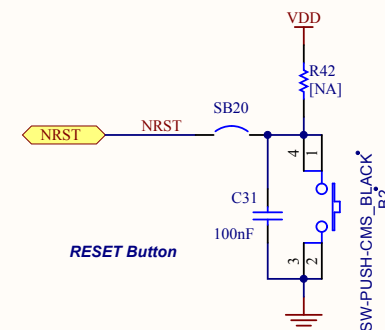
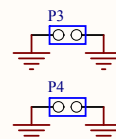
PB3	USART TX	USART TX
PB4	USART RX	USART RX
PA14	SWCLK	SWCLK
PA13	SWDIO	SWDIO
PB3	SWO	SWO

## LED BUCK converter



LEDs

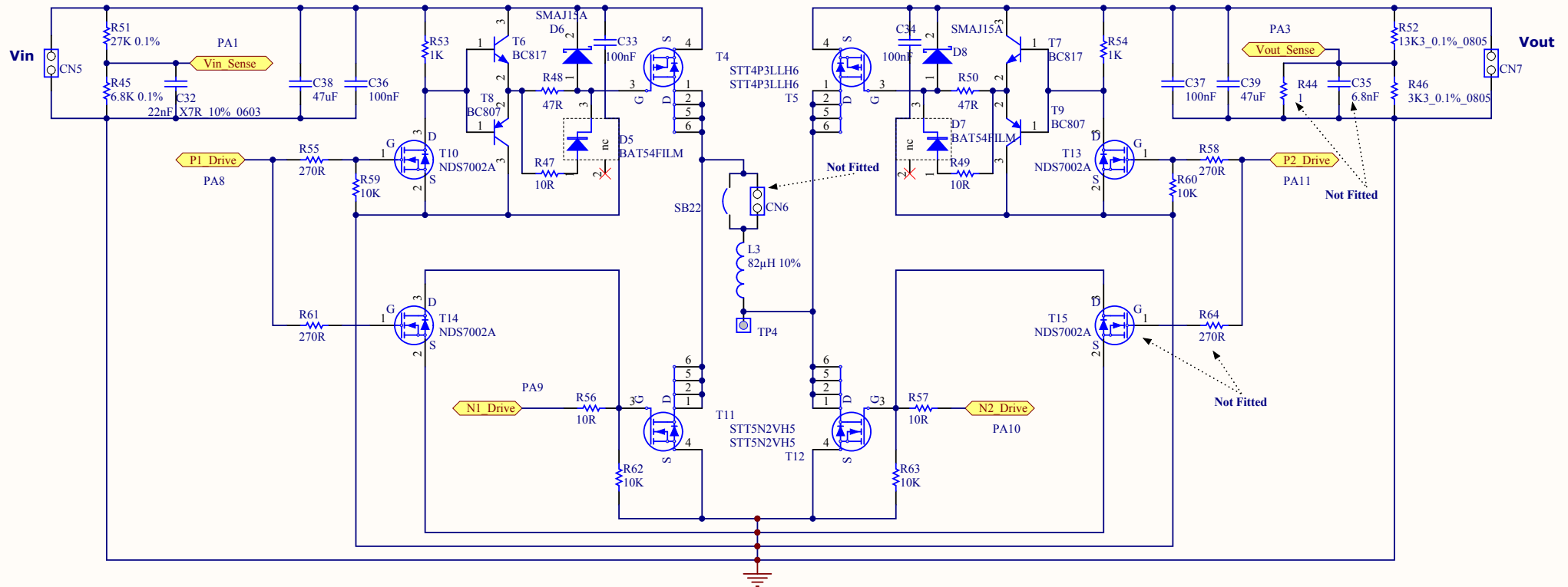
### Wired on Solder Side



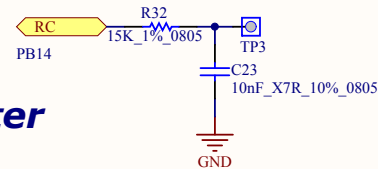
Title: LED BUCK converter		
Project: STM32F3348-DISCO		
Size: A4	Reference: MB1142	Revision: B-01
Date: 14-May-14	Sheet: 4 of 5	




## BUCK/BOOST Converter



## RC Low Pass Filter



Title: <b>BUCK / BOOST CONVERTER</b>			 life.augmented
Project: <b>STM32F3348-DISCO</b>			
Size: <b>A4</b>	Reference: <b>MB1142</b>	Revision: <b>B-01</b>	
Date: <b>30-May-14</b>		Sheet: <b>5</b> of <b>5</b>	