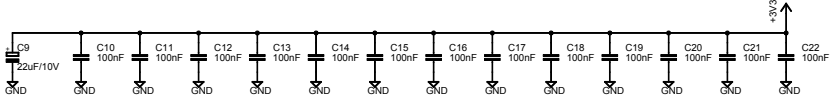
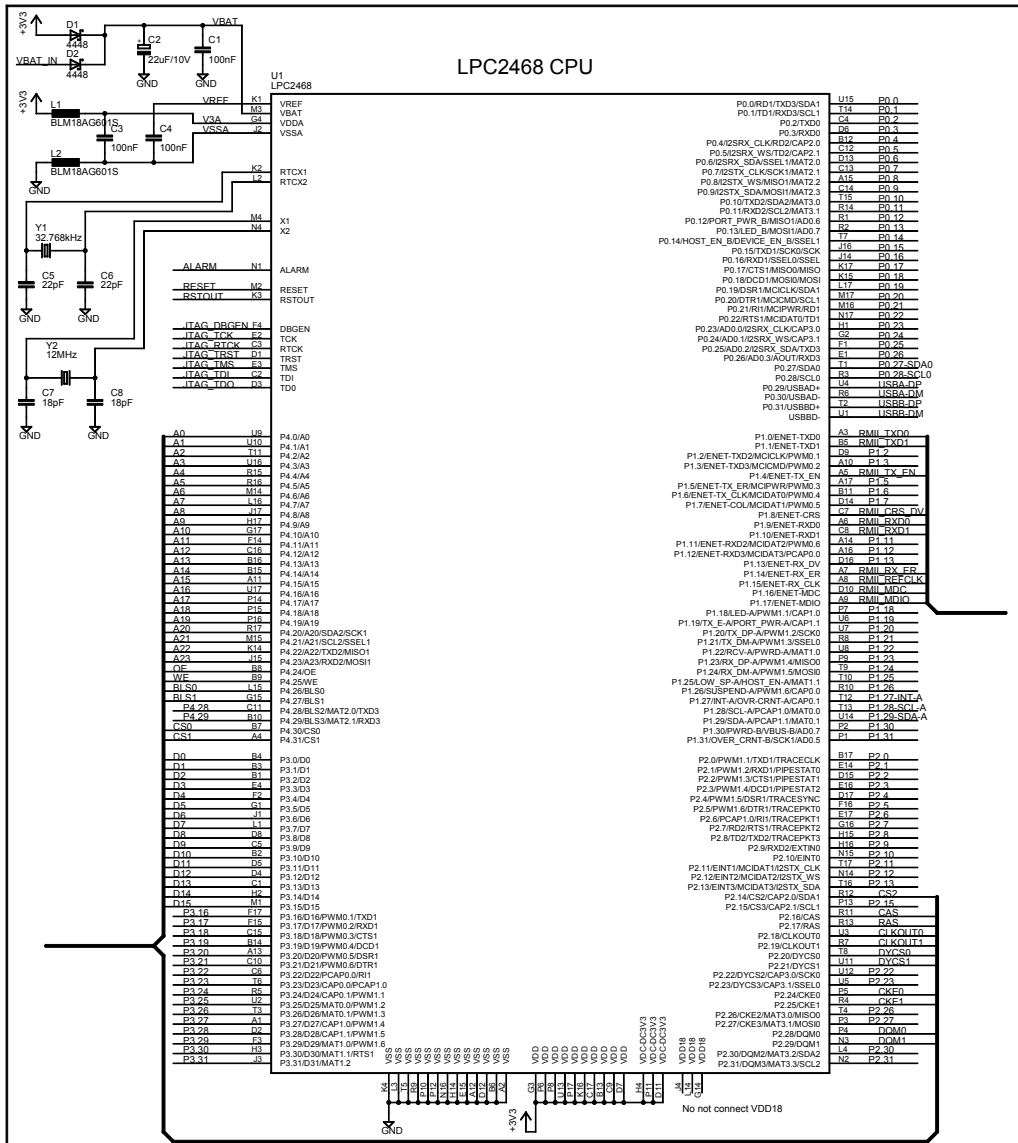
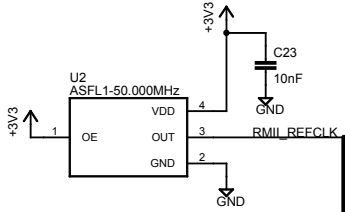


LPC2468 CPU

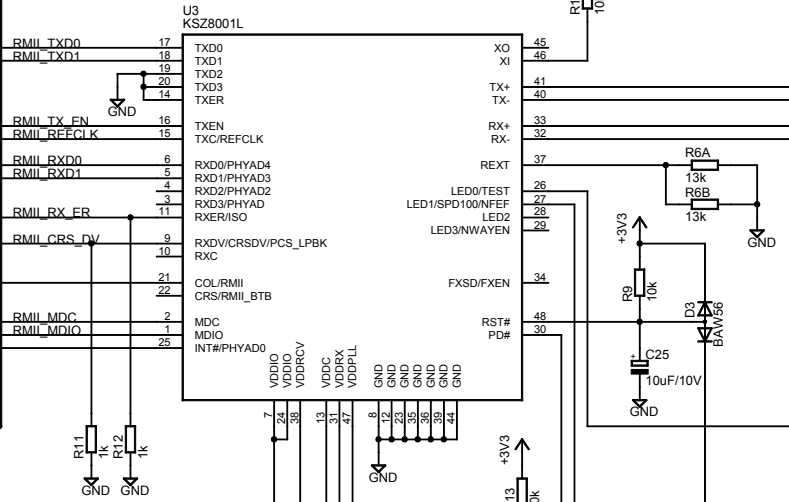


Place at U1, pin G3, P6, P8, U13, P17, K16, C17, B13, C9, D7, H4, P11, D11

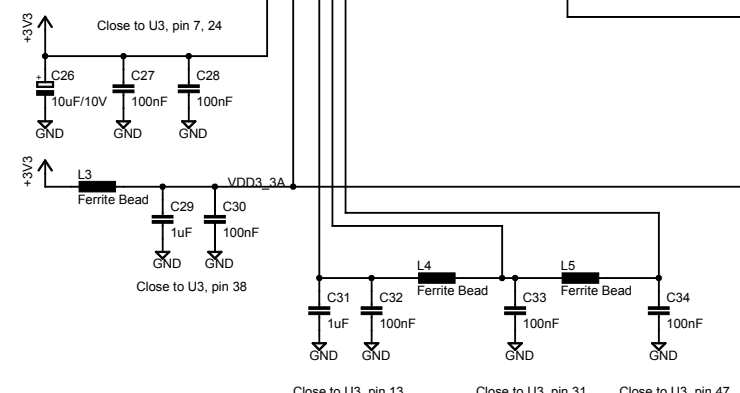
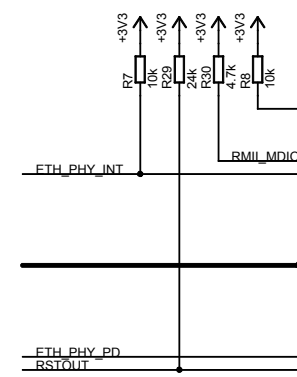
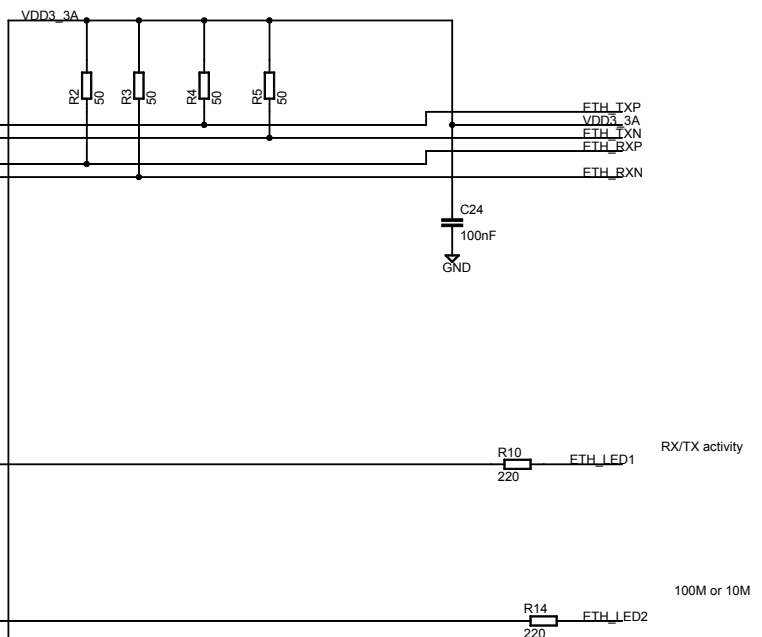
50MHz oscillator



KSZ8001L 100/10M Ethernet PHY (in RMI mode)

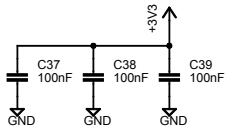
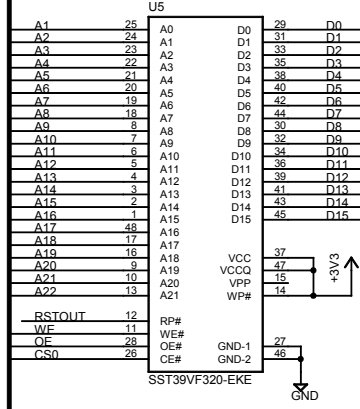


RJ45 Ethernet connector



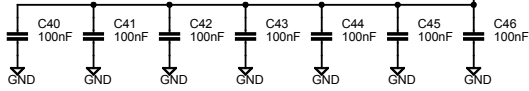
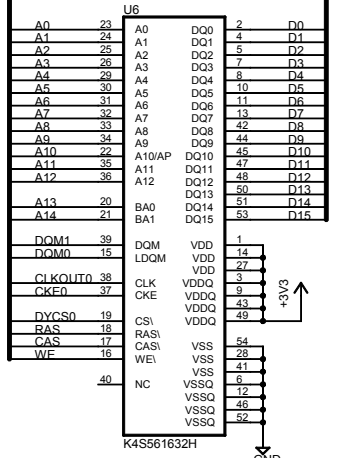
TITLE: LPC2468 OEM Board v2.0.0	
Document Number:	REV:
Date: 2007-11-15 22:01:58	Sheet: 2/6

32Mbit (4MByte) NOR FLASH
(CS0 = 0x8000 0000 - 0x80FF FFFF)



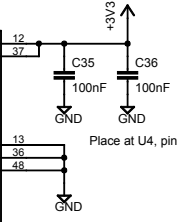
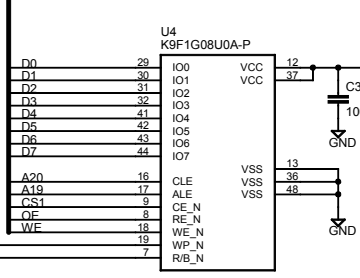
Place at U5, pin 37, 47, 13

256Mbit (32MByte) SDRAM
(DYCS0 = 0xA000 0000 - 0xAFFF FFFF)

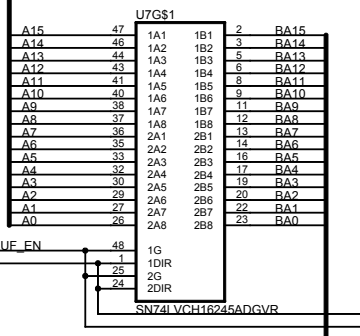
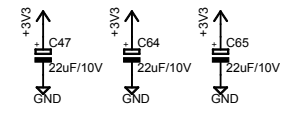


Place at U6, pin 1, 14, 27, 3, 9, 43, 49

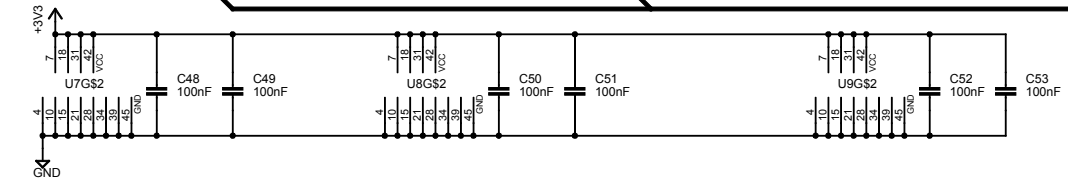
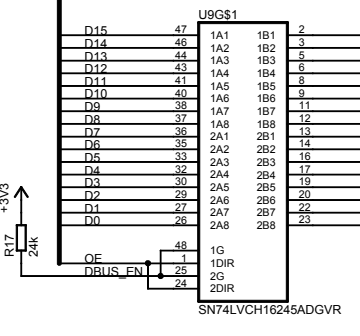
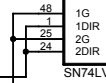
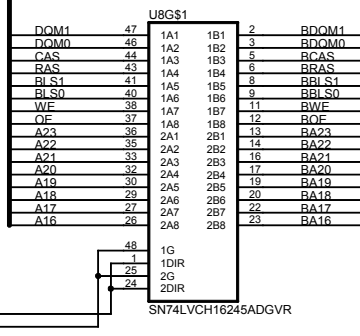
1Gbit (128MByte) NAND FLASH
(CS1 = 0x8100 0000 - 0x81FF FFFF)

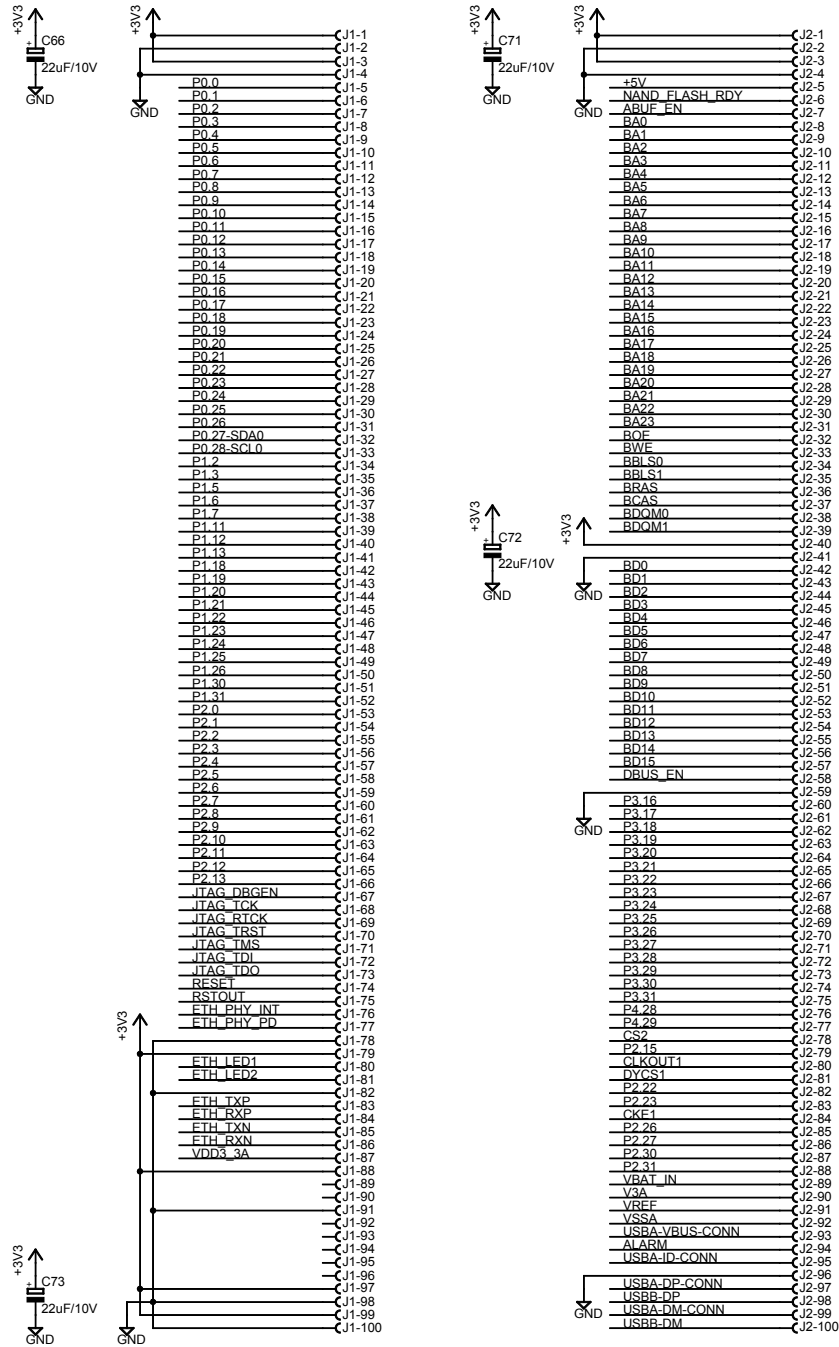


Place at U4, pin 12, 37



Grounded on boards that are mounted on v1.3 OEM boards





TITLE: LPC2468 OEM Board v2.0.0

Document Number: REV:

Date: 2007-11-15 22:01:58 Sheet: 5/6